

TABLE OF CONTENTS MIG/TIG

Weldsafe electrode sharpener	26
Tungsten electrodes	28
Anti spatter grease	30
Holders for tungsten elektrodes	32
Handy Pen	32
Carbon dioxide collet (CO ² wire cutters)	32
Weldsafe MIG torches	34
Weldsafe TIG torches	48

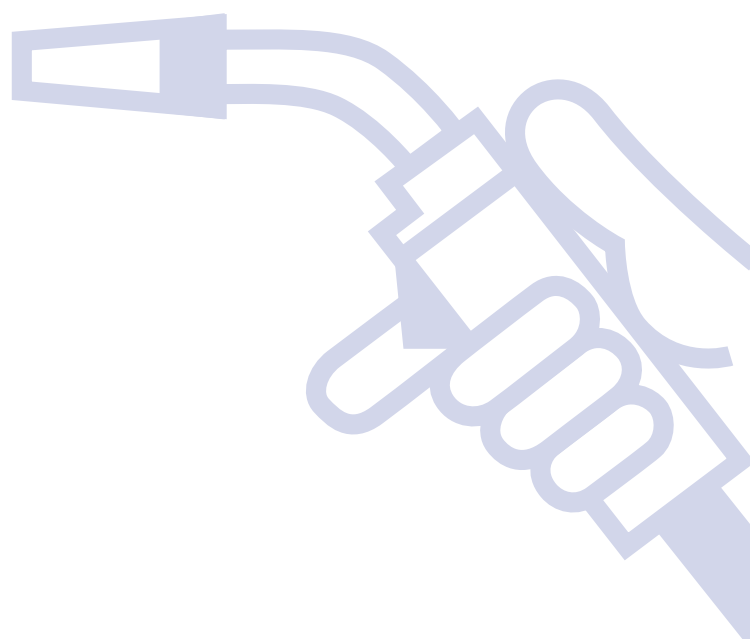
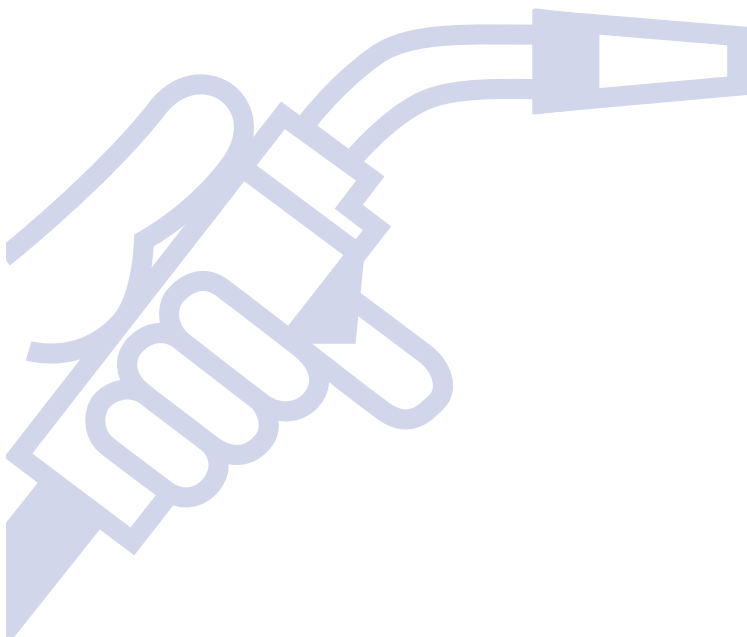


TABLE OF CONTENTS MIG/TIG

03



Wolfram electrodes

The electrodes used in the TIG welding process etc. are made from wolfram. This element has the following properties:

- High melting point (3410°C)
- Low electrical resistance
- High heat conductivity capacity

The areas in which the wolfram electrodes supplied by Vlamboog are used are TIG welding, plasma welding, orbital welding, micro plasma welding and plasma cutting.

All Vlamboog wolfram electrodes satisfy standard ISO 6848.

To optimise power transmission and performance, elements in the form of metal oxides are added to the wolfram. This addition is also referred to in practice as “dope”.

A few examples of the additions are:

- Lanthanum oxide (La₂O₃) 1-2%
- Zirconium oxide (ZrO₂) 0.4-0.8%
- Cerium oxide (CeO₂) 1-2%

As a general rule, the following applies to the choice of the type of electrode:

- Alternating current: pure wolfram, WX electrode or wolfram with ZrO₂ (Zirconium oxide).
- Direct current: wolfram with the addition of other metal oxides.

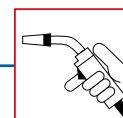
The selection of substances added also affects the wear and tear of the electrode. Electrodes with 2% lanthanum oxide and 2% cerium oxide respectively wear less quickly than electrodes to which other substances have been added. Lanthanum is more resistant to splitting than cerium.

The table below shows the possibilities for using the TIG welding process with the materials in question:

TIG welding process materials	Direct current		Alternating current
	Electrode on minus pole	Electrode on plus pole	
Non-alloyed & low-alloyed steel	Yes, very suitable	No	Possible
High-alloyed stainless steel, heat & acid-resistant steel	Yes, very suitable	No	Possible
Copper and copper alloys	Yes, very suitable	No	Possible
Aluminium bronze	Possible	No	Yes
Nickel and nickel alloys	Yes	No	Yes
Aluminium, and aluminium alloys	Yes, with square wave power source	Only low amperages possible (10-30A)	Yes
Magnesium and magnesium alloys	Yes	Only low amperages possible (10-30A)	Yes
Titanium	Yes	No	No

Overview of advice on Wolfram electrodes

Type of electrode	Head colour	Type and percentage of oxide (dope)	Direct current - pole	Direct current + pole	Alternating current	Arc stability	Reignition	Useful life	Material to be welded
WL-10	Black	LaO ₂ 0.90 – 1.20%	++	--	±	+	+	++	Fe – Stainless steel
WL-15	Gold	LaO ₂ 1.30 – 1.70%	++	--	±	+	+	++	Fe – Stainless steel
WL-20	Blue	LaO ₂ 1.80 – 2.20%	++	--	±	+	+	++	Fe – Stainless steel
WP	Green	W ≥99.95%			+	-	-	-	Aluminium
WX	Sky-blue	Oxides of rare earth metals	++	--	++	+	++	++	Fe – Stainless steel – Aluminium
WC-20	Grey	CeO ₂ 1.80 – 2.20%	++	--	±	+	+	+	Fe – RVS
WZ-8	White	ZrO ₂ 0.70 – 0.90%	++		+	+	+	+	Fe – Stainless steel – Aluminium



Weldsafe Tip-Trimmer: Tungsten Grinder and Cutter



The Weldsafe tungsten grinder and cutter is a wet-grinding machine with the ability to both grind and cut tungsten electrodes in the same chamber.

Wet grinding produces a polished tip with no blueing, while at the same time the hazardous dust is collected in the fluid and transferred to a replaceable waste container.

- No external or additional exhaust system needed.
- Wet-grinding with replaceable, easy to empty waste container safely removes grinding dust.
- Precise longitudinal grinding eliminates any concavity of the electrode tip.
- Cuts and grinds electrodes as short as 10mm in length.
- Exact adjustment minimises consumption of tungsten electrode when grinding.
- Adjustment of grinding position on wheel triples diamond wheel life expectancy.
- Grind and cut tungsten electrodes in one chamber!

The Weldsafe tungsten grinder/cutter is the first wet-grinding machine with the ability to both grind and cut tungsten electrodes in the same chamber.

Wet grinding produces a polished tip with no blueing, while at the same time the hazardous dust is collected in the fluid and transferred to a replaceable waste container. No tools are needed for the easy removal of the waste container for its safe disposal.

In the tungsten grinder/cutter, the electrode is ground on the side of the diamond wheel and produces a perfectly straight longitudinal finish without any concavity of the tip. The guide for the electrode holder can be set in three different positions on the diamond wheel and this can triple the lifetime of the wheel.

Technical specifications

Power Supply 230V/50-60Hz or 115V/50-60 Hz.

Electrodes: 1.0 to 4.0 mm

Speed: 9500 Rpm

Diamond wheel: 100 mm diameter

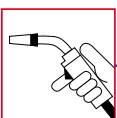
Grinding speed: 60 m/s

Weight: 12.8 kg

Product nr	Description	Packing
03.42.93000	Weldsafe tungsten electrode sharpener 230V (no cutting)	1
03.42.93005	Weldsafe tungsten electrode sharpener and cutter 230V (see picture)	1

Weldsafe Tip Trimmer parts and consumables

Product nr	Description	Packing
03.42.93007	Dust collector with liquid	1
03.42.93010	Grinding liquid 5 liter	1
03.42.93011	Grinding liquid 0.5 liter	1
03.42.93012	Grinding liquid 0.25 liter	1
03.42.93013	Grinding liquid concentrate 0.5L for 10 liter grinding liquid	1
03.42.93015	Diamond wheel Ø 100 mm.	1
03.42.93016	Cutting wheel Ø 60 mm.	1
03.42.93022	Electrode clamp 1.0 mm.	1
03.42.93023	Electrode clamp 1.6 mm.	1
03.42.93024	Electrode clamp 2.0 mm.	1
03.42.93025	Electrode clamp 2.4 mm.	1
03.42.93026	Electrode clamp 3.2 mm.	1



Product nr	Description	Packing
03.42.93027	Electrode clamp 4.0 mm.	1
03.42.93028	Electrode clamp 4.8 mm.	1
03.42.93029	Electrode clamp 5.6 mm.	1
03.42.93030	Electrode clamp 6.4 mm.	1
03.42.93033	Fuse screw plug (stop plug) for electrode holders	1
03.42.93034	Stainless steel barrel 0.8 - 4.8 mm.	1
03.42.93036	Handle for stainless steel barrel 0,8-4,8 mm.	1
03.42.93037	Cutting length adjustment 25mm.	1
03.42.93038	Cutting length adjustment 87 mm.	1
03.42.93039	Cutting length adjustment free	1
03.42.93042	Bush cutting 2.4 - 3.2 mm.	1
03.42.93043	Bush cutting 4.0 - 4.8 mm.	1
03.42.93045	Electrode holder 5.4 - 8.0 mm complete	1
03.42.93046	Handle Electrode holder 5.6 - 8.0 mm complete	1
03.42.93047	Stainless steel barrel 5.6,6 - 8.0 mm complete	1
03.42.93050	Locking wedge for dust collector	1
03.42.93081	Inspection cover Tip-Trimmer	1

Weldsafe portable tungsten grinder 230V



Portable tungsten grinder for quick, precise and dust-free preparation of tungsten electrodes. The Weldsafe tungsten electrode sharpener is an enclosed electrode grinder, which significantly reduces harmful grinding dust exposure to both the user and the environment. Integrated vacuum extraction with replaceable dust filter. Supplied in a lightweight case.

Repeatable Precision Grinding

- Degree scale lets you set your grind angle and lock it into place.
- Diamond wheel grinds longitudinally for a steady arc and optimal performance.
- Easy to use electrode positioning/locking device holds tungsten securely in place.
- Grind tapers from 15° to 180°.

Technologically Advanced

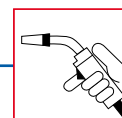
- Integrated filter cartridge captures all tungsten dust.
- Variable grinding position to maximize life of the diamond grinding wheel.

Eco-Friendly

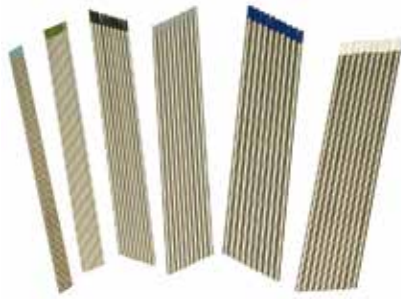
- Disposable cartridge safely collects all dust particles.
- No separate exhaust system required.
- Meets strict EU environmental regulations, capturing dust at the source.

EN 292-1, EN 292-2, EN 294

Product nr	Description	Packing
03.42.93100	Weldsafe portable tungsten grinder	1
03.42.93108	Diamond wheel Ø 40 mm.	1
03.42.93118	Electrode clamp Ø 2.4 mm	1
03.42.93127	Weldsafe dustfilter	1



Weldsafe tungsten electrodes



Tungsten electrodes have an extremely high melting point of 3410 degrees Celsius. This makes tungsten electrodes very suitable for igniting and maintaining the electronic arc in the various metal processes.

Available on request and in various lengths, sharpened or unsharpened.

EN ISO 6848

Weldsafe tungsten electrodes WL-15, 1.5% Lanthanium, 175 mm, gold

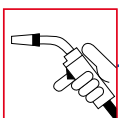
Product nr	Description	Packing
03.49.00710	Ø 1.0 mm.	10/200
03.49.00716	Ø 1.6 mm.	10/200
03.49.00720	Ø 2.0 mm.	10/200
03.49.00724	Ø 2.4 mm.	10/200
03.49.00730	Ø 3.0 mm.	10/200
03.49.00732	Ø 3.2 mm.	10/200
03.49.00740	Ø 4.0 mm.	10/200
03.49.00748	Ø 4.8 mm.	5/100
03.49.00764	Ø 6.4 mm.	5/100

Weldsafe tungsten electrodes WL-10, 1% Lanthanium, 175 mm, black

Product nr	Description	Packing
03.49.15310	Ø 1.0 mm.	10/200
03.49.15316	Ø 1.6 mm.	10/200
03.49.15320	Ø 2.0 mm.	10/200
03.49.15324	Ø 2.4 mm.	10/200
03.49.15330	Ø 3.0 mm.	10/200
03.49.15332	Ø 3.2 mm.	10/200
03.49.15340	Ø 4.0 mm.	10/200
03.49.15348	Ø 4.8 mm.	5/100

Weldsafe tungsten electrodes WL-20, Witstar, 2% Lanthanium, 175 mm, blue

Product nr	Description	Packing
03.49.15410	Ø 1.0 mm.	10/200
03.49.15416	Ø 1.6 mm.	10/200
03.49.15420	Ø 2.0 mm.	10/200
03.49.15424	Ø 2.4 mm.	10/200
03.49.15430	Ø 3.0 mm.	10/200
03.49.15432	Ø 3.2 mm.	10/200
03.49.15440	Ø 4.0 mm.	10/200
03.49.15448	Ø 4.8 mm.	5/100



Weldsafe tungsten electrodes WP, 175 mm, green

Product nr	Description	Packing
03.49.15610	Ø 1.0 mm.	10/200
03.49.15616	Ø 1.6 mm.	10/200
03.49.15620	Ø 2.0 mm.	10/200
03.49.15624	Ø 2.4 mm.	10/200
03.49.15630	Ø 3.0 mm.	10/200
03.49.15632	Ø 3.2 mm.	10/200
03.49.15640	Ø 4.0 mm.	10/200
03.49.15648	Ø 4.8 mm.	5/100

Weldsafe tungsten electrodes WX, Seltene Erde, 175 mm, turquoise

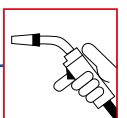
Product nr	Description	Packing
03.49.15710	Ø 1.0 mm.	10/200
03.49.15716	Ø 1.6 mm.	10/200
03.49.15720	Ø 2.0 mm.	10/200
03.49.15724	Ø 2.4 mm.	10/200
03.49.15730	Ø 3.0 mm.	10/200
03.49.15732	Ø 3.2 mm.	10/200
03.49.15740	Ø 4.0 mm.	10/200

Weldsafe tungsten electrodes WC-20, 2% Cerium, 175 mm, grey

Product nr	Description	Packing
03.49.15910	Ø 1.0 mm.	10/200
03.49.15916	Ø 1.6 mm.	10/200
03.49.15920	Ø 2.0 mm.	10/200
03.49.15924	Ø 2.4 mm.	10/200
03.49.15930	Ø 3.0 mm.	10/200
03.49.15932	Ø 3.2 mm.	10/200
03.49.15940	Ø 4.0 mm.	10/200
03.49.15948	Ø 4.8 mm.	5/100
03.49.15964	Ø 6.4 mm.	5/100

Weldsafe tungsten electrodes WZ-8, 0.8% Zirconium, 175 mm, white

Product nr	Description	Packing
03.49.16110	Ø 1.0 mm.	10/200
03.49.16116	Ø 1.6 mm.	10/200
03.49.16120	Ø 2.0 mm.	10/200
03.49.16124	Ø 2.4 mm.	10/200
03.49.16130	Ø 3.0 mm.	10/200
03.49.16132	Ø 3.2 mm.	10/200
03.49.16140	Ø 4.0 mm.	10/200



Weldsafe Tip Dip anti spatter grease



Anti spatter grease Tip Dip guarantees simple removal of welding spatters and optimal protection of nozzle and contact tips. Tip Dip increases the stability of the arc and contains no harmful hydrocarbon detergents.

Product nr	Description	Packing
03.46.24990	Tin with net content of 225 grams.	1/36
03.46.24995	Tin with net content of 500 grams.	1/12

Ceramstak welding spray (Anti spatter spray)

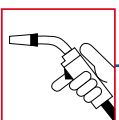


Ceramstak anti spatter spray prevents welding spatters from sticking to the welding torch or to the workpiece. Ceramstak contains no harmful or flammable detergents. Ceramstak spray also offers the perfect solution to stainless steel.

New antispatter spray ceramic-based.

- Resistant up to 1500 ° C.
- Ideal for welding torches and automatic machines.
- It lasts for many working hours.
- +25% product = more convenient
- More ECO: each 10 cans of 500 ml you have 2,5 cans less of waste compared with 400 ml.

Product nr	Description	Packing
03.47.10000	Ceramstak welding spray net content 500 ml.	1/12



ANTITEK weldingspray (Anti spatter spray)

ANTITEK ecological anti spatter spray prevents welding spatters from sticking to the welding torch or to the workpiece. ANTITEK contains no harmful or flammable detergents and is fully silicone free. ANTITEK spray also offers the perfect protection to stainless steel.

03

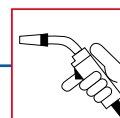
Product nr	Description	Packing
03.47.17000	ANTITEK weldingspray net content 500 ml.	1/12

Weldclean weldingspray (Anti spatter spray)

Weldclean ecological anti spatter liquid prevents welding spatters from sticking to the torch or to the work piece. Weldclean is an anti spatter liquid with water as a base. A work piece treated with Weldclean does not need any extra treatment before varnishing, powder coating or galvanizing.

Weldclean is available in refill packs of 5, 10 or 20 litres. Racks for the refills are available, as well as aluminium cans with sprayers.

Product nr	Description	Packing
03.48.18010	Refill, without tap, 5 litres.	5
03.48.18012	Refill, with tap, 20 litres.	20
03.48.18015	Tap for jerrycan.	1/25
03.48.18030	Aluminium can (empty) with sprayer, 500 ml.	1/25
03.48.18031	Aluminium can (empty).	1/25
03.48.18032	Sprayer for aluminium can.	1/25



Vlamboog tungsten electrode sharpening holder



Vlamboog tungsten electrode sharpening holder for precision sharpening !

A precise angle is paramount to any high quality welding job. This Vlamboog-made tungsten holder has a rotatable brass cylinder for easy and exact positioning of the electrode. This brass-aluminium electrode rotator is solid and lightweight and comes with spanners for 1.6mm, 2.4mm and 3.2mm electrodes.

Product nr	Description	Packing
03.50.04000	Vlamboog electrode sharpening holder complete (incl. 3 spanners)	1
03.50.04016	Vlamboog spanner 1.6 mm	1
03.50.04024	Vlamboog spanner 2.4 mm	1
03.50.04032	Vlamboog spanner 3.2 mm	1
03.50.04100	Vlamboog electrode sharpening holder aluminium body (lower part)	1
03.50.04105	Vlamboog electrode sharpening holder aluminium spanner head (top part)	1
03.50.04110	Vlamboog electrode sharpening holder brass rotatable cylinder part (middle part)	1
03.50.04115	Vlamboog electrode sharpening holder cap	1

Vlamboog Handy Pen



Vlamboog Handy Pen, for an optimal threading through! The Handy Pen optimizes the supply of TIG wire to the welding process and can be held just like any regular writing pen. The wire supply is being controlled by a small feed-through wheel. Handy Pen is all about optimized control of the welding process and improved ergonomic working conditions.

- The Handy Pen can be used for wire diameters from 1.0 mm to 3.2 mm.
- Available per piece. Standard colour: black.
- Other colours and private label versions on request.

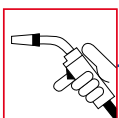
Product nr	Description	Packing
03.50.02065	Vlamboog Handy Pen black	1/10

Fix carbon dioxide collet



The Fix collet is a versatile carbon dioxide wire cut collet for the removing of welding spatters, cleaning and fastening of the mouth piece and contact tips and for the threading through and cutting of welding wire.

Product nr	Description	Packing
03.50.20100	No. 1, 12-15 mm.	1/25
03.50.20101	No. 2, 15-18 mm.	1/25



Weldsafe wire cut collet



Multifunctional sturdy carbon dioxide wire cutter for removing welding spatters, cleaning the mouth piece and contact tip and for the threading through and cutting of the wire.

The Weldsafe wire cut collet is made of high quality carbon steel and ensures a long life time.

03

Product nr	Description	Packing
03.62.30100	Weldsafe wire cutters medium, 180 mm	1/25
03.62.30150	Weldsafe wire cutters large, 210 mm	1/25

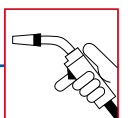
Welper Pliers



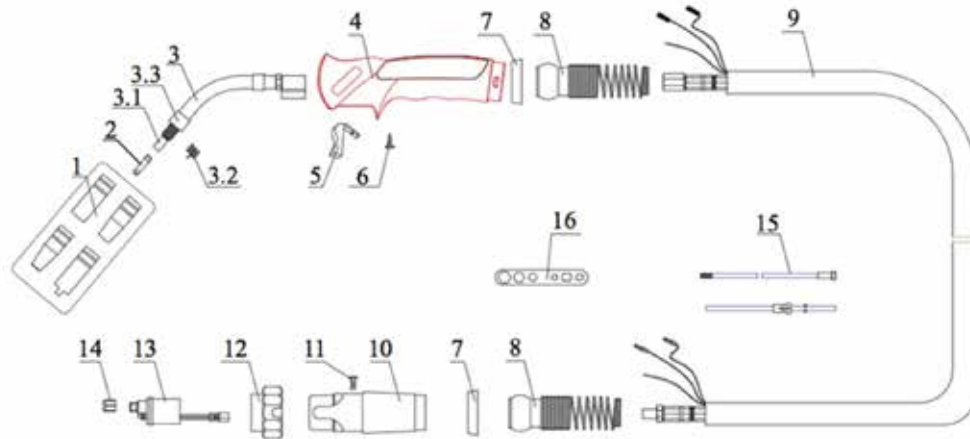
Multifunctional sturdy Welper pliers for removing welding spatters, cleaning the mouth piece and contact tip and for the threading through and cutting of the wire.

The Welper is made of high quality carbon steel and ensures a long life time.

Product nr	Description	Packing
03.50.30100	Mini W-1 CO2 welding pliers, 178 mm length.	1/5/25
03.50.30150	YS-50 CO2 welding pliers, 210 mm length.	1/5/25



Weldsafe MIG torch WS 15 air cooled



Product nr	Description	Packing
03.65.15030	Weldsafe Mig torch WS 15 - 3 meter with Euroconnector	1
03.65.15040	Weldsafe Mig torch WS 15 - 4 meter with Euroconnector	1
03.65.15050	Weldsafe Mig torch WS 15 - 5 meter with Euroconnector	1

Contact tip M6x6 - WS 15

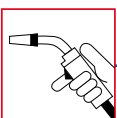
Product nr	Description	Dimensions	Draw nr	Packing
03.61.00100	Contact tip M6x6	Ø 0.6 E-Cu.	2	10
03.61.00102	Contact tip M6x6	Ø 0.8 E-Cu.	2	10
03.61.00104	Contact tip M6x6	Ø 0.9 E-Cu.	2	10
03.61.00106	Contact tip M6x6	Ø 1.0 E-Cu.	2	10
03.61.00108	Contact tip M6x6	Ø 1.2 CuCrZr.	2	10
03.61.00110	Contact tip M6x6	Ø 0.6 CuCrZr.	2	10
03.61.00112	Contact tip M6x6	Ø 0.8 CuCrZr.	2	10
03.61.00114	Contact tip M6x6	Ø 0.9 CuCrZr.	2	10
03.61.00116	Contact tip M6x6	Ø 1.0 CuCrZr.	2	10

Insulated liner - WS 15

Product nr	Description	Dimensions	Draw nr	Packing
03.63.01535	Insulated liner blue	Ø 0.6-0.8 x 3m.	15	1
03.63.01545	Insulated liner blue	Ø 0.6-0.8 x 4m.	15	1
03.63.01555	Insulated liner blue	Ø 0.6-0.8 x 5m.	15	1
03.63.02535	Insulated liner red	Ø 1.0-1.2mm x 3m.	15	1
03.63.02545	Insulated liner red	Ø 1.0-1.2mm x 4m.	15	1
03.63.02555	Insulated liner red	Ø 1.0-1.2mm x 5m.	15	1

Teflon liner - WS 15

Product nr	Description	Dimensions	Draw nr	Packing
03.63.01538	Teflon liner blue	Ø 0.6-0.8mm x 3m.	15	1
03.63.01548	Teflon liner blue	Ø 0.6-0.8mm x 4m.	15	1
03.63.01558	Teflon liner blue	Ø 0.6-0.8mm x 5m.	15	1
03.63.02638	Teflon liner red	Ø 1.0-1.2mm x 3m.	15	1
03.63.02648	Teflon liner red	Ø 1.0-1.2mm x 4m.	15	1
03.63.02658	Teflon liner red	Ø 1.0-1.2mm x 5m.	15	1



MIG/TIG

Nozzle - WS 15

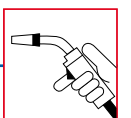
Product nr	Description	Diameter	Draw nr	Packing
03.62.00105	Nozzle cylindrical	Ø 16 mm	1	10
03.62.00120	Nozzle conical	Ø 12 mm	1	10
03.62.00145	Nozzle extra conical	Ø 9.5 mm	1	10

Gas nozzle holder - WS 15

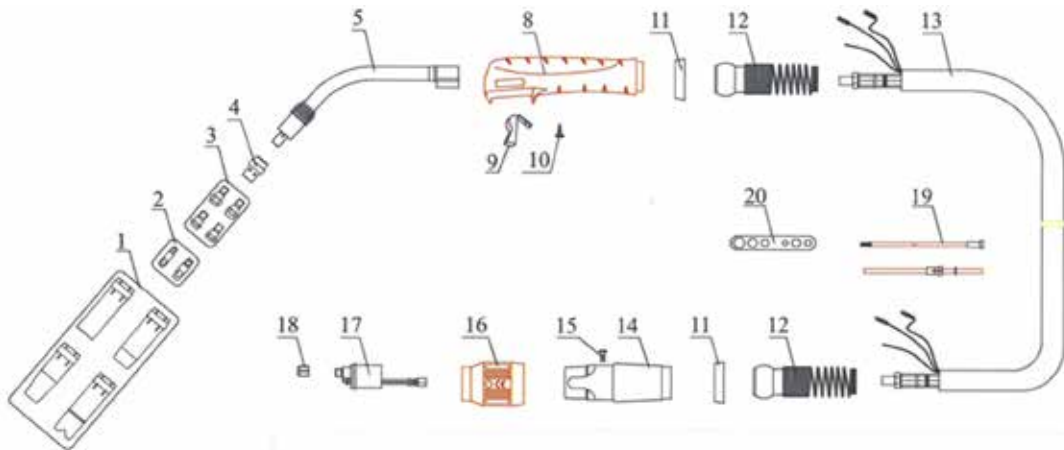
Product nr	Description	Draw nr	Packing
03.61.50000	Gas nozzle holder M6 x M8 x 1 LH.	3.1	1

Swan neck - WS 15

Product nr	Description	Draw nr	Packing
03.63.00030	Swan neck WS15.	3	1
03.63.00032	Swan neck flexibel WS15 FX.	3	1
03.63.05600	Shroud spring, WS15.	3.2	10
03.63.05240	Isolation sleeve WS15.	3.3	1



Weldsafe MIG torch WS 24 air cooled



Product nr	Description	Packing
03.65.24030	Weldsafe Mig torch WS 24 - 3 meter with Euroconnector	1
03.65.24040	Weldsafe Mig torch WS 24 - 4 meter with Euroconnector	1
03.65.24050	Weldsafe Mig torch WS 24 - 5 meter with Euroconnector	1

Contact tip M6x8 - WS 24

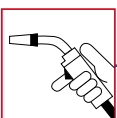
Product nr	Description	Dimensions	Draw nr	Packing
03.61.00202	Contact tip M6x8	Ø 0.8 E-Cu.	2	10
03.61.01206	Contact tip M6x8	Ø 1.0 E-Cu.	2	10
03.61.00208	Contact tip M6x8	Ø 1.2 E-Cu.	2	10
03.61.00212	Contact tip M6x8	Ø 1.6 E-Cu.	2	10
03.61.00203	Contact tip M6x8	Ø 0.8 CuCrZr.	2	10
03.61.00207	Contact tip M6x8	Ø 1.0 CuCrZr.	2	10
03.61.00209	Contact tip M6x8	Ø 1.2 CuCrZr.	2	10
03.61.00213	Contact tip M6x8	Ø 1.6 CuCrZr.	2	10

Insulated liner - WS 24

Product nr	Description	Dimensions	Draw nr	Packing
03.63.01535	Insulated liner blue	Ø 0.6-0.8 x 3m.	19	1
03.63.01545	Insulated liner blue	Ø 0.6-0.8 x 4m.	19	1
03.63.01555	Insulated liner blue	Ø 0.6-0.8 x 5m.	19	1
03.63.02535	Insulated liner red	Ø 1.0-1.2mm x 3m.	19	1
03.63.02545	Insulated liner red	Ø 1.0-1.2mm x 4m.	19	1
03.63.02555	Insulated liner red	Ø 1.0-1.2mm x 5m.	19	1

Teflon liner - WS 24

Product nr	Description	Dimensions	Draw nr	Packing
03.63.01538	Teflon liner blue	Ø 0.6-0.8mm x 3m.	19	1
03.63.01548	Teflon liner blue	Ø 0.6-0.8mm x 4m.	19	1
03.63.01558	Teflon liner blue	Ø 0.6-0.8mm x 5m.	19	1
03.63.02638	Teflon liner blue	Ø 1.0-1.2mm x 3m.	19	1
03.63.02648	Teflon liner red	Ø 1.0-1.2mm x 4m.	19	1
03.63.02658	Teflon liner red	Ø 1.0-1.2mm x 5m.	19	1



MIG/TIG

Nozzle - WS 24

Product nr	Description	Diameter	Draw nr	Packing
03.62.00290	Nozzle cylindrical	Ø 17 mm	1	10
03.62.00295	Nozzle conical	Ø 12.5 mm	1	10
03.62.00300	Nozzle strong conical	Ø 10 mm	1	10

Diffuser - WS 24

Product nr	Description	length	Draw nr	Packing
03.63.00510	Diffuser standard white	20mm	4	10

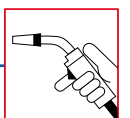
Contact tip holder - WS 24

Product nr	Description	length	Draw nr	Packing
03.61.50002	Contact tip holder M6	26mm	3	10

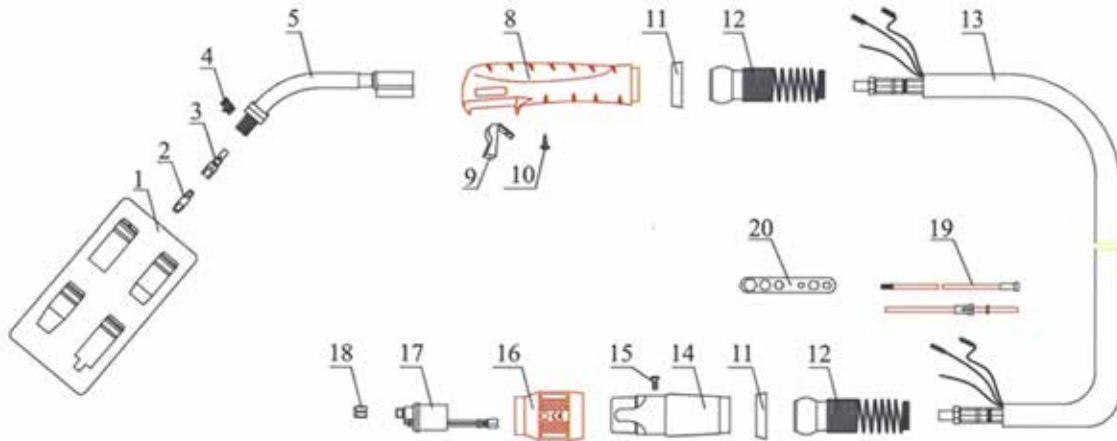
Swan neck - WS 24

Product nr	Description	Draw nr	Packing
03.63.00050	Swan neck WS 24.	5	1

03



Weldsafe MIG torch WS 25 air cooled



Product nr	Description	Packing
03.65.25030	Weldsafe Mig torch WS 25 - 3 meter with Euroconnector	1
03.65.25040	Weldsafe Mig torch WS 25 - 4 meter with Euroconnector	1
03.60.15050	Weldsafe Mig torch WS 25 - 5 meter with Euroconnector	1

Contact tip M6x8 - WS 25

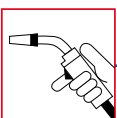
Product nr	Description	Dimensions	Draw nr	Packing
03.61.00202	Contact tip M6x8	Ø 0.8 E-Cu.	2	10
03.61.00206	Contact tip M6x8	Ø 1.0 E-Cu.	2	10
03.61.00208	Contact tip M6x8	Ø 1.2 E-Cu.	2	10
03.61.00212	Contact tip M6x8	Ø 1.6 E-Cu.	2	10
03.61.00203	Contact tip M6x8	Ø 0.8 CuCrZr.	2	10
03.61.00207	Contact tip M6x8	Ø 1.0 CuCrZr.	2	10
03.61.00209	Contact tip M6x8	Ø 1.2 CuCrZr.	2	10
03.61.00213	Contact tip M6x8	Ø 1.6 CuCrZr.	2	10

Insulated liner - WS 25

Product nr	Description	Dimensions	Draw nr	Packing
03.63.01535	Insulated liner blue	Ø 0.6-0.8 x 3m.	19	1
03.63.01545	Insulated liner blue	Ø 0.6-0.8 x 4m.	19	1
03.63.01555	Insulated liner blue	Ø 0.6-0.8 x 5m.	19	1
03.63.02535	Insulated liner red	Ø 1.0-1.2mm x 3m.	19	1
03.63.02545	Insulated liner red	Ø 1.0-1.2mm x 4m.	19	1
03.63.02555	Insulated liner red	Ø 1.0-1.2mm x 5m.	19	1

Teflon liner - WS 25

Product nr	Description	Dimensions	Draw nr	Packing
03.63.01538	Teflon liner blue	Ø 0.6-0.8mm x 3m.	19	1
03.63.01548	Teflon liner blue	Ø 0.6-0.8mm x 4m.	19	1
03.63.01558	Teflon liner blue	Ø 0.6-0.8mm x 5m.	19	1
03.63.02638	Teflon liner blue	Ø 1.0-1.2mm x 3m.	19	1
03.63.02648	Teflon liner blue	Ø 1.0-1.2mm x 4m.	19	1
03.63.02658	Teflon liner blue	Ø 1.0-1.2mm x 5m.	19	1



MIG/TIG

Nozzle - WS 25

Product nr	Description	Diameter	Draw nr	Packing
03.62.00406	Nozzle cylindrical	Ø 18 mm	1	10
03.62.00415	Nozzle conical	Ø 15 mm	1	10

Contact tip holder - WS 25

Product nr	Description	Draw nr	Packing
03.61.50102	Contact tip holder M6 WS 25.	3	10

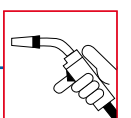
Swan neck - WS 25

Product nr	Description	Draw nr	Packing
03.63.00060	Swan neck WS 25.	5	1
03.63.00062	Swan neck flexibele WS 25 FX.	5	1

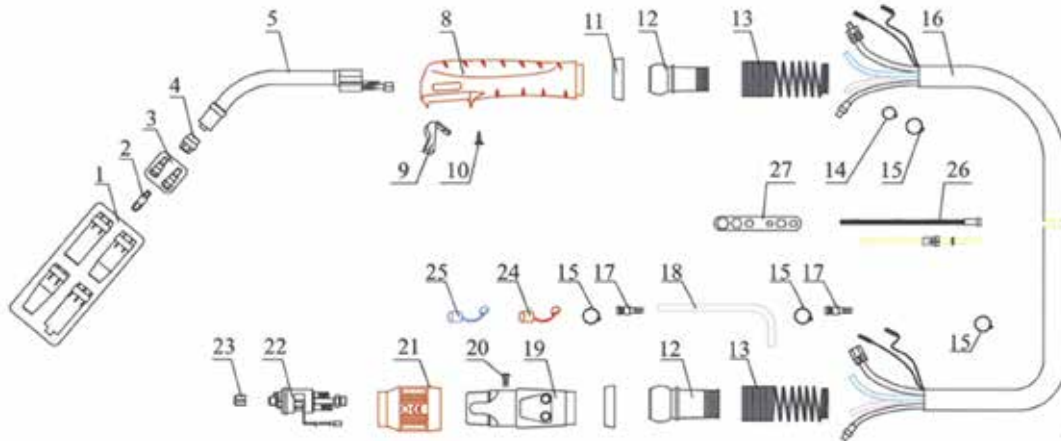
Shroud spring - WS 25

Product nr	Description	Draw nr	Packing
03.63.05620	Shroud spring WS 25.	4	10

03



Weldsafe MIG torch WS 36 air cooled



Product nr	Description	Packing
03.65.36030	Weldsafe Mig torch WS 36 - 3 meter with Euroconnector	1
03.65.36040	Weldsafe Mig torch WS 36 - 4 meter with Euroconnector	1
03.65.36050	Weldsafe Mig torch WS 36 - 5 meter with Euroconnector	1

Contact tip M6x8 - WS 36

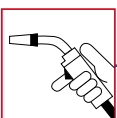
Product nr	Description	Dimensions	Draw nr	Packing
03.61.00202	Contact tip M6x8	Ø 0.8 E-Cu.	2	10
03.61.00206	Contact tip M6x8	Ø 1.0 E-Cu.	2	10
03.61.00208	Contact tip M6x8	Ø 1.2 E-Cu.	2	10
03.61.00212	Contact tip M6x8	Ø 1.6 E-Cu.	2	10
03.61.00203	Contact tip M6x8	Ø 0.8 CuCrZr.	2	10
03.61.00207	Contact tip M6x8	Ø 1.0 CuCrZr.	2	10
03.61.00209	Contact tip M6x8	Ø 1.2 CuCrZr.	2	10
03.61.00213	Contact tip M6x8	Ø 1.6 CuCrZr.	2	10

Insulated liner - WS 36

Product nr	Description	Dimensions	Draw nr	Packing
03.63.01535	Insulated liner blue	Ø 0.6-0.8 x 3m.	26	1
03.63.01545	Insulated liner blue	Ø 0.6-0.8 x 4m.	26	1
03.63.01555	Insulated liner blue	Ø 0.6-0.8 x 5m.	26	1
03.63.02535	Insulated liner red	Ø 1.0-1.2mm x 3m.	26	1
03.63.02545	Insulated liner red	Ø 1.0-1.2mm x 4m.	26	1
03.63.02555	Insulated liner red	Ø 1.0-1.2mm x 5m.	26	1

Teflon liner - WS 36

Product nr	Description	Dimensions	Draw nr	Packing
03.63.01538	Teflon liner blue	Ø 0.6-0.8mm x 3m.	26	1
03.63.01548	Teflon liner blue	Ø 0.6-0.8mm x 4m.	26	1
03.63.01558	Teflon liner blue	Ø 0.6-0.8mm x 5m.	26	1
03.63.02638	Teflon liner blue	Ø 1.0-1.2mm x 3m.	26	1
03.63.02648	Teflon liner red	Ø 1.0-1.2mm x 4m.	26	1
03.63.02658	Teflon liner red	Ø 1.0-1.2mm x 5m.	26	1



MIG/TIG

Nozzle - WS 36

Product nr	Description	Diameter	Draw nr	Packing
03.62.00600	Nozzle cylindrical	Ø 19 mm	1	10
03.62.00605	Nozzle conical	Ø 16 mm	1	10
03.62.00610	Nozzle strong conical	Ø 12 mm	1	10

Diffuser - WS 36

Product nr	Description	Lenght	Draw nr	Packing
03.63.00530	Diffuser standard white	32.5 mm	4	10
03.63.00540	Diffuser black	32.5 mm	4	10
03.63.00550	Diffuser ceramic	32.5 mm	4	10

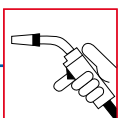
Contact tip holder - WS 36

Product nr	Description	Length	Draw nr	Packing
03.61.50302	Contact tip holder M6	28 mm	3	10
03.61.50304	Contact tip holder M8	28 mm	3	10

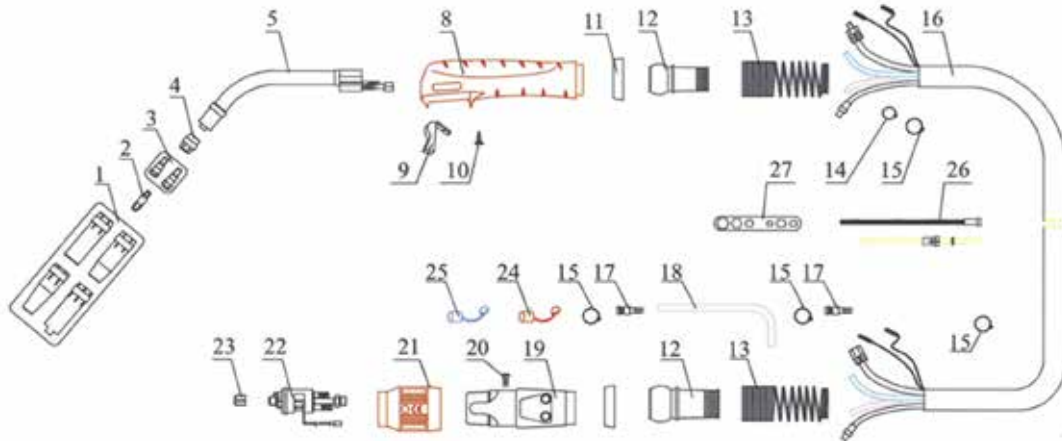
Swan neck - WS 36

Product nr	Description	Draw nr	Packing
03.63.00080	Swan neck WS 36.	5	1

03



Weldsafe MIG torch WS 24W water cooled



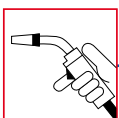
Product nr	Description	Packing
03.65.24130	Weldsafe Mig torch WS 24W - 3 meter with Euroconnector	1
03.65.24140	Weldsafe Mig torch WS 24W - 4 meter with Euroconnector	1
03.65.24150	Weldsafe Mig torch WS 24W - 5 meter with Euroconnector	1

Contact tip M6x8 - WS 24W

Product nr	Description	Dimensions	Draw nr	Packing
03.61.00202	Contact tip M6x8	Ø 0.8 E-Cu.	2	10
03.61.00206	Contact tip M6x8	Ø 1.0 E-Cu.	2	10
03.61.00208	Contact tip M6x8	Ø 1.2 E-Cu.	2	10
03.61.00212	Contact tip M6x8	Ø 1.6 E-Cu.	2	10
03.61.00203	Contact tip M6x8	Ø 0.8 CuCrZr.	2	10
03.61.00207	Contact tip M6x8	Ø 1.0 CuCrZr.	2	10
03.61.00209	Contact tip M6x8	Ø 1.2 CuCrZr.	2	10
03.61.00213	Contact tip M6x8	Ø 1.6 CuCrZr.	2	10

Liner blank - WS 24W

Product nr	Description	Dimensions	Draw nr	Packing
03.63.01530	Liner blank	Ø 0.8 x 3m.	26	1
03.63.01541	Liner blank	Ø 0.8 x 4m.	26	1
03.63.01550	Liner blank	Ø 0.8 x 5m.	26	1
03.63.02530	Liner blank	Ø 1.0-1.2mm x 3m.	26	1
03.63.02540	Liner blank	Ø 1.0-1.2mm x 4m.	26	1
03.63.02550	Liner blank	Ø 1.0-1.2mm x 5m.	26	1
03.63.04636	Liner blank	Ø 1.6mm x 3m.	26	1
03.63.04645	Liner blank	Ø 1.6mm x 4m.	26	1
03.63.04655	Liner blank	Ø 1.6mm x 5m.	26	1



MIG/TIG

Teflon liner - WS 24W

Product nr	Description	Dimensions	Draw nr	Packing
03.63.01538	Teflon liner blue	Ø 0.6-0.8mm x 3m.	26	1
03.63.01548	Teflon liner blue	Ø 0.6-0.8mm x 4m.	26	1
03.63.01558	Teflon liner blue	Ø 0.6-0.8mm x 5m.	26	1
03.63.02638	Teflon liner blue	Ø 1.0-1.2mm x 3m.	26	1
03.63.02648	Teflon liner red	Ø 1.0-1.2mm x 4m.	26	1
03.63.02658	Teflon liner red	Ø 1.0-1.2mm x 5m.	26	1
03.63.03638	Teflon liner yellow	Ø 1.6mm x 3m.	26	1
03.63.03648	Teflon liner yellow	Ø 1.6mm x 4m.	26	1
03.63.03658	Teflon liner yellow	Ø 1.6mm x 5m.	26	1

Nozzle - WS 24W

Product nr	Description	Diameter	Draw nr	Packing
03.62.00290	Nozzle cylindrical	Ø 17 mm	1	10
03.62.00295	Nozzle conical	Ø 12.5 mm	1	10
03.62.00300	Nozzle strong conical	Ø 10 mm	1	10

Diffuser - WS 24W

Product nr	Description	Length	Draw nr	Packing
03.63.00510	Diffuser standard white	20mm	4	10

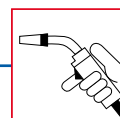
Contact tip holder - WS 24W

Product nr	Description	Length	Draw nr	Packing
03.61.50002	Contact tip holder M6	26mm	3	10

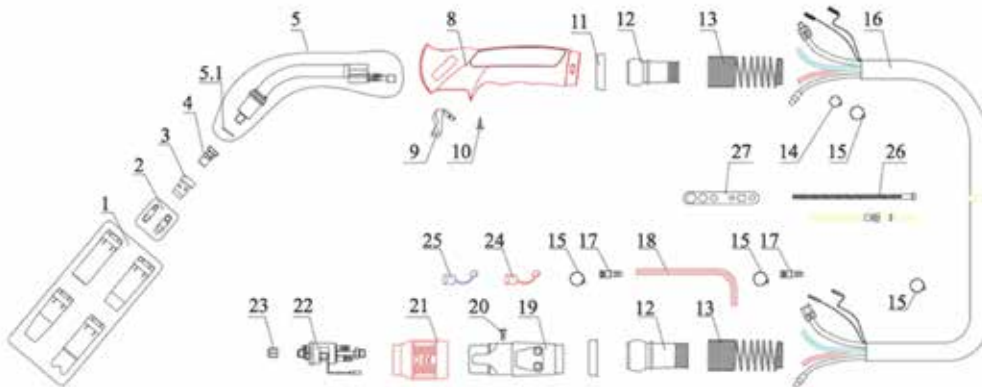
Swan neck - WS 24W

Product nr	Description	Draw nr	Packing
03.63.00085	Swan neck WS 24W.	5	1

03

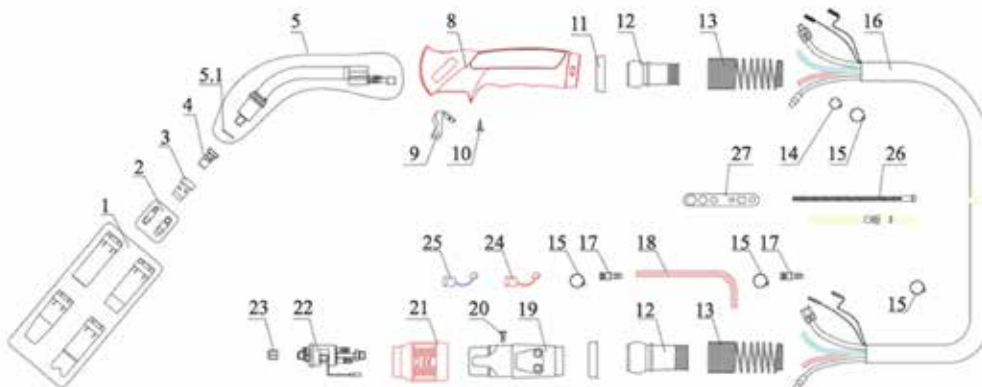


Weldsafe MIG torch WS 401 air cooled



Product nr	Description	Packing
03.65.40030	Weldsafe Mig torch WS 401 - 3 meter with Euroconnector	1
03.65.40040	Weldsafe Mig torch WS 401 - 4 meter with Euroconnector	1
03.65.40050	Weldsafe Mig torch WS 401 - 5 meter with Euroconnector	1

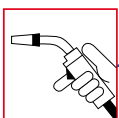
Weldsafe MIG torch WS 501 air cooled



Product nr	Description	Packing
03.65.50030	Weldsafe Mig torch WS 501 - 3 meter with Euroconnector	1
03.65.50040	Weldsafe Mig torch WS 501 - 4 meter with Euroconnector	1
03.65.50050	Weldsafe Mig torch WS 501 - 5 meter with Euroconnector	1

Contact tip M8x10 - WS 401/501

Product nr	Description	Dimensions	Draw nr	Packing
03.61.00300	Contact tip M8x10	Ø 0.8 E-Cu.	2	10
03.61.00302	Contact tip M8x10	Ø 1.0 E-Cu.	2	10
03.61.00105	Contact tip M8x10	Ø 0.9 E-Cu.	2	10
03.61.00304	Contact tip M8x10	Ø 1.2 E-Cu.	2	10
03.61.00308	Contact tip M8x10	Ø 1.6 E-Cu.	2	10
03.61.00301	Contact tip M8x10	Ø 0.8 CuCrZr.	2	10
03.61.00303	Contact tip M8x10	Ø 1.0 CuCrZr.	2	10
03.61.00305	Contact tip M8x10	Ø 1.2 CuCrZr.	2	10
03.61.00307	Contact tip M8x10	Ø 1.4 CuCrZr.	2	10
03.61.00309	Contact tip M8x10	Ø 1.6 CuCrZr.	2	10

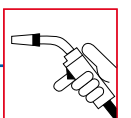


Liner blank - WS 401/501

Product nr	Description	Dimensions	Draw nr	Packing
03.63.01530	Liner blank	Ø 0.8mm x 3m.	26	1
03.63.01541	Liner blank	Ø 0.8mm x 4m.	26	1
03.63.01550	Liner blank	Ø 0.8mm x 5m.	26	1
03.63.02530	Liner blank	Ø 1.0-1.2mm x 3m.	26	1
03.63.02540	Liner blank	Ø 1.0-1.2mm x 4m.	26	1
03.63.02550	Liner blank	Ø 1.0-1.2mm x 5m.	26	1
03.63.04636	Liner blank	Ø 1.6mm x 3m.	26	1
03.63.04645	Liner blank	Ø 1.6mm x 4m.	26	1
03.63.04655	Liner blank	Ø 1.6mm x 5m.	26	1

Teflon liner - WS 401/501

Product nr	Description	Dimensions	Draw nr	Packing
03.63.01538	Teflon liner blue	Ø 0.6-0.8mm x 3m.	26	1
03.63.01548	Teflon liner blue	Ø 0.6-0.8mm x 4m.	26	1
03.63.01558	Teflon liner blue	Ø 0.6-0.8mm x 5m.	26	1
03.63.02638	Teflon liner blue	Ø 1.0-1.2mm x 3m.	26	1
03.63.02648	Teflon liner red	Ø 1.0-1.2mm x 4m.	26	1
03.63.02658	Teflon liner red	Ø 1.0-1.2mm x 5m.	26	1
03.63.03638	Teflon liner yellow	Ø 1.6mm x 3m.	26	1
03.63.03648	Teflon liner yellow	Ø 1.6mm x 4m.	26	1
03.63.03658	Teflon liner yellow	Ø 1.6mm x 5m.	26	1



MIG/TIG

Nozzle - WS 401/501

Product nr	Description	Diameter	Draw nr	Packing
03.62.00800	Nozzle cylindrical	Ø 20 mm	1	10
03.62.00810	Nozzle conical	Ø 16 mm	1	10
03.62.00830	Nozzle strong conical	Ø 14 mm	1	10

Diffuser - WS 401/501

Product nr	Description	length	Draw nr	Packing
03.63.00560	Diffuser standard white	28mm	3	10
03.63.00555	Diffuser ceramic	28mm	3	10
03.63.00570	Diffuser black-	28mm	3	10

Contact tip holder - WS 401/501

Product nr	Description	length	Draw nr	Packing
03.61.50402	Contact tip holder M6	25mm	4	10
03.61.50404	Contact tip holder M8	25mm	4	10

Swan neck - WS 401/501

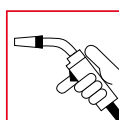
Product nr	Description	Draw nr	Packing
03.63.00090	Swan neck WS 401.	5	1
03.63.00100	Swan neck WS 501.	5	1

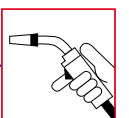
Water inlet hose assembly - WS 401/501

Product nr	Description	length	Packing
03.62.58513	Water inlet hose assembly	3m.	1
03.62.58514	Water inlet hose assembly	4m.	1
03.62.58515	Water inlet hose assembly	5m.	1

Outer liner assembly - WS 401/501

Product nr	Description	length	Packing
03.62.58523	Outer liner assembly	3m.	1
03.62.58524	Outer liner assembly	4m.	1
03.62.58525	Outer liner assembly	5m.	1





Weldsafe TIG torches

TIG torches come in many configurations.

To order the TIG Torch configuration that suits your needs, please select the torch model and specify the required cable length, as shown below.

Please contact us to double-check the most suitable configuration and machine-connection.

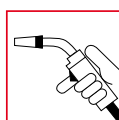
Type	Amperage	Torch selection			Cable length (meters)
		Cooling	Torch		
WS9	125	Air	Fixed	4	
WS9	125	Air	Fixed	8	
WS9	125	Air	Flex	4	
WS9	125	Air	Flex	8	
WS17	150	Air	Fixed	4	
WS17	150	Air	Fixed	8	
WS17	150	Air	Flex	4	
WS17	150	Water	Flex	8	
WS18	350	Water	Fixed	4	
WS18	350	Water	Fixed	8	
WS18	350	Water	Flex	4	
WS18	350	Water	Flex	8	
WS18SC	400	Water	Fixed	4	
WS18SC	400	Water	Fixed	8	
WS20	250	Water	Fixed	4	
WS20	250	Water	Fixed	8	
WS20	250	Water	Flex	4	
WS20	250	Water	Flex	8	
WS26	200	Air	Fixed	4	
WS26	200	Air	Fixed	8	
WS26	200	Air	Flex	4	
WS26	200	Air	Flex	8	

torch bodies

Product nr	Description	Packing
04.23.40901	Torch body WS9.	1
04.23.40902	Torch body WS9FX.	1
04.23.41701	Torch body WS17.	1
04.23.41702	Torch body WS17FX.	1
04.23.41801	Torch body WS18.	1
04.23.41802	Torch body WS18FX.	1
04.23.42001	Torch body WS20.	1
04.23.42002	Torch body WS20FX.	1
04.23.42601	Torch body WS26.	1
04.23.42602	Torch body WS26FX.	1

Standard ceramic cup WS9/20

Product nr	Description	Diameter	Ref. nr.	Packing
04.23.00001	Standard ceramic cup nr. 4.	Ø 6.5mm	13N08	10
04.23.00002	Standard ceramic cup nr. 5.	Ø 8.0mm	13N09	10
04.23.00003	Standard ceramic cup nr. 6.	Ø 9.5mm	13N10	10
04.23.00004	Standard ceramic cup nr. 7.	Ø 11.0mm	13N11	10
04.23.00005	Standard ceramic cup nr. 8.	Ø 12.5mm	13N12	10
04.23.00006	Standard ceramic cup nr. 10.	Ø 16.0mm	13N13	10



Standard ceramic cup WS17/18/26

Product nr	Description	Diameter	Ref. nr.	Packing
04.23.10001	Standard ceramic cup nr. 4.	Ø 6.5mm	10N50	10
04.23.10002	Standard ceramic cup nr. 5.	Ø 8.0mm	10N49	10
04.23.10003	Standard ceramic cup nr. 6.	Ø 9.5mm	10N48	10
04.23.10004	Standard ceramic cup nr. 7.	Ø 11.0mm	10N47	10
04.23.10005	Standard ceramic cup nr. 8.	Ø 12.5mm	10N46	10
04.23.10006	Standard ceramic cup nr. 10.	Ø 16.0mm	10N45	10
04.23.10007	Standard ceramic cup nr. 12.	Ø 19.0mm	10N44	10

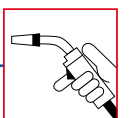
03

Standard ceramic gas lens cup WS9/20

Product nr	Description	Diameter	Ref. nr.	Packing
04.23.00011	Standard ceramic gas lens cup nr. 4.	Ø 6.0mm	53N58	10
04.23.00012	Standard ceramic gas lens cup nr. 5.	Ø 8.0mm	53N59	10
04.23.00013	Standard ceramic gas lens cup nr. 6.	Ø 10.0mm	53N60	10
04.23.00014	Standard ceramic gas lens cup nr. 7.	Ø 11.0mm	53N61	10
04.23.00015	Standard ceramic gas lens cup nr.10.	Ø 12.5mm	53N61-S	10

Standard ceramic gas lens cup WS17/18/26

Product nr	Description	Diameter	Ref. nr.	Packing
04.23.10011	Standard ceramic gas lens cup nr. 4.	Ø 6.0mm	54N18	10
04.23.10012	Standard ceramic gas lens cup nr. 5.	Ø 8.0mm	54N17	10
04.23.10013	Standard ceramic gas lens cup nr. 6.	Ø 10.0mm	54N16	10
04.23.10014	Standard ceramic gas lens cup nr. 7.	Ø 11.0mm	54N15	10
04.23.10015	Standard ceramic gas lens cup nr. 8.	Ø 12.5mm	54N14	10
04.23.10016	Standard ceramic gas lens cup nr. 12.	Ø 19.5mm	54N19	10



MIG/TIG

Standard collet WS9/20

Product nr	Description	Diameter	Ref. nr.	Packing
04.23.00103	Standard collet	Ø 1.6mm.	13N22	10
04.23.00105	Standard collet	Ø 2.4mm.	13N23	10
04.23.00106	Standard collet	Ø 3.2mm.	13N24	10

Standard collet WS17/18/26

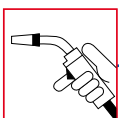
Product nr	Description	Diameter	Ref. nr.	Packing
04.23.10102	Standard collet	Ø 1.0mm	10N22	10
04.23.10103	Standard collet	Ø 1.6mm	10N23	10
04.23.10105	Standard collet	Ø 2.4mm	10N24	10
04.23.10106	Standard collet	Ø 3.2mm	10N25	10

Standard collet body WS9/20

Product nr	Description	Diameter	Ref. nr.	Packing
04.23.00203	Standard collet body	Ø 1.6mm	13N27	10
03.23.00205	Standard collet body	Ø 2.4mm	13N28	10
04.23.00206	Standard collet body	Ø 3.2mm	13N29	10

Standard collet body WS17/18/26

Product nr	Description	Diameter	Ref. nr.	Packing
04.23.10203	Standard collet body	Ø 1.6mm	10N31	10
04.23.10204	Standard collet body	Ø 2.0mm	10N31M	10
04.23.10205	Standard collet body	Ø 2.4mm	10N32	10
04.23.10206	Standard collet body	Ø 3.2mm	10N28	10

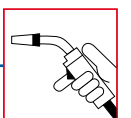


Gas lens body WS9/20

Product nr	Description	Diameter	Ref. nr.	Packing
04.23.00313	Gas lens body	Ø 1.6mm	45V43	10
04.23.00315	Gas lens body	Ø 2.4mm	45V44	10
03.23.00316	Gas lens body	Ø 3.2mm	45V45	10

Gas lens body WS17/18/26

Product nr	Description	Diameter	Ref. nr.	Packing
04.23.10313	Gas lens body	Ø 1.6mm	45V25	10
04.23.10314	Gas lens body	Ø 2.0mm	45V25M	10
04.23.10315	Gas lens body	Ø 2.4mm	45V26	10
04.23.10316	Gas lens body	Ø 3.2mm	45V27	10
04.23.10317	Gas lens body	Ø 4.0mm	45V28	10



MIG/TIG

Torch back cap WS9/20

Product nr	Description	Ref. nr.	Packing
04.23.50001	Back cap long.	41V24	10
04.23.50002	Back cap short.	41V33	10
04.23.50003	Back cap medium.	41V35	10

Torch back cap WS17/18/26

Product nr	Description	Ref. nr.	Packing
04.23.50101	Torch back cap long	57Y02	10
04.23.50102	Torch back cap short	57Y04	10

Insulator torch ring WS9/20

Product nr	Description	Ref. nr.	Packing
04.23.80001	Insulator torch ring.	598882	10

Insulator torch ring WS17/18/26

Product nr	Description	Ref. nr.	Packing
04.23.80101	Insulator torch ring.	18CG	10

Insulator gas lens WS9-20

Product nr	Description	Ref. nr.	Packing
04.23.80002	Insulator gas lens.	53N66	10

Insulator gas lens WS17/18/26

Product nr	Description	Ref. nr.	Packing
04.23.80103	Insulator gas lens.	54N01	10

